



DAR  
TOWER



## ABOUT BIN FAQUEEH

Bin Faqeeh Real Estate Investment Company was founded in Bahrain in 2008 to develop real estate of the highest quality and desirability. Bin Faqeeh is now widely recognized as a clear real estate leader in the Kingdom.

Bin Faqeeh oversees each aspect of a property's lifecycle, from construction and development to appraisal and property management, ensuring that every step of the process is carried out to the highest possible standard.

Bin Faqeeh is committed to fostering and maintaining relationships of trust with everyone with whom they do business, and they strive to represent a partner in luxury you can count on.

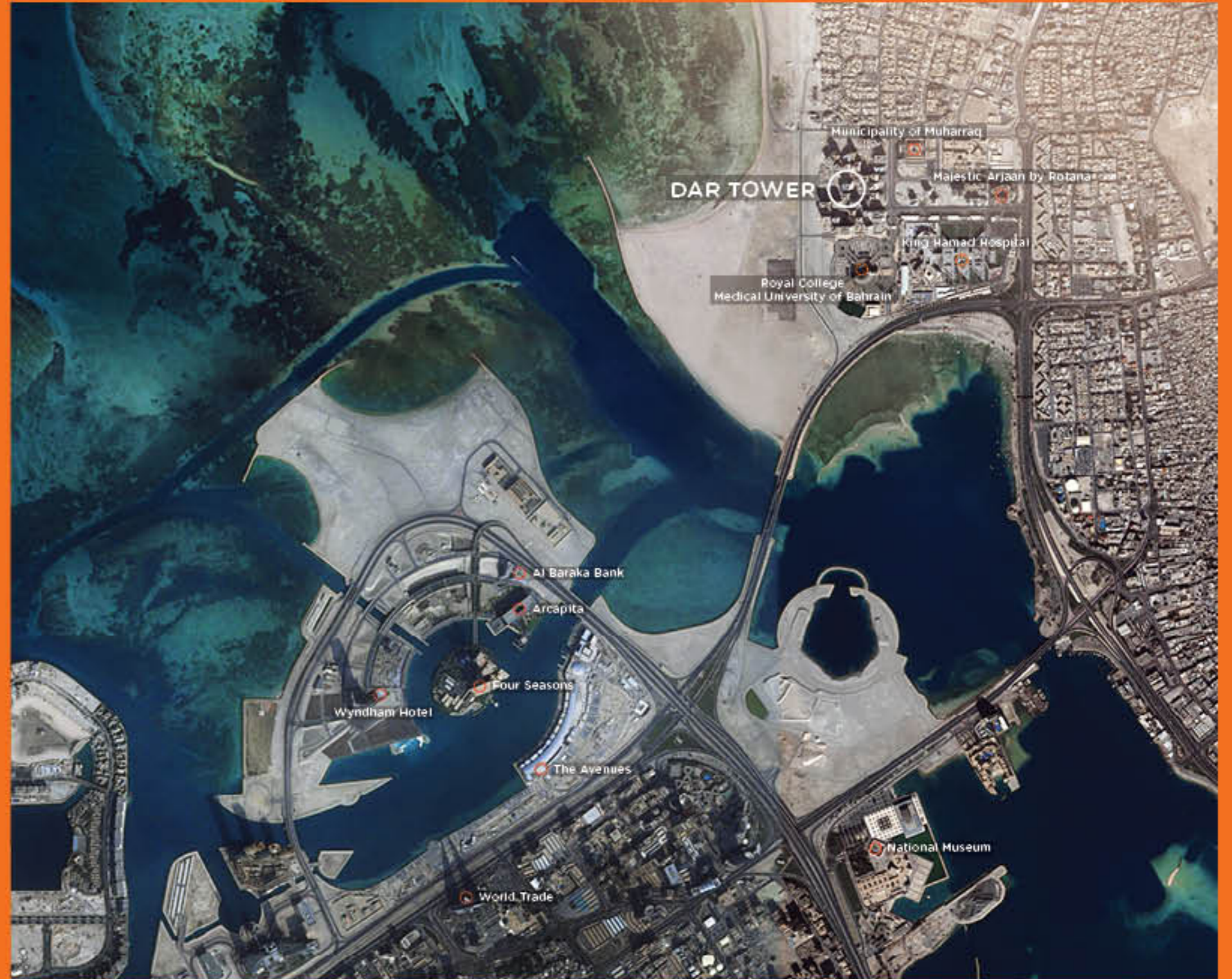
تأسست شركة بن فقيه للاستثمار العقاري في البحرين في عام ٢٠٠٨ لتطوير العقارات وتوفير أعلى مستويات الجودة والقيمة. وعلى نطاق واسع الآن، تعتبر شركة بن فقيه لشركة الرائدة في مجال العقارات في المملكة.

تشرف بن فقيه على كل جانب من جوانب دورة حياة العقار، بدءاً من البناء والتطوير، ووصولاً إلى مرحلة التقييم وإدارة العقار، مع ضمان تنفيذ كل خطوة من خطوات العملية بأعلى المعايير الممكنة.

تلتزم بن فقيه بتميز والحفاظ على علاقات الثقة مع كل من يقوم بأعمال تجارة معها، ويسعون إلى تمثيل شريك يمكنك الاعتماد عليه في تقديم حياة متروقة.



## LOCATION MAP





## LOCATION & LANDMARKS

DAR Tower is located in Busaiteen, an area which lies in the north-west of Muharraq Island. The name means 'garden' in Arabic and was originally inspired by the abundant orchards that used to flourish there. It's now a modern urban environment with plenty opportunities for work and play within easy reach, bordered by beaches to the north, and skirted by the road to the nearby Bahrain International Airport on its southern edge. Bahrain's main island is easily reached via Sheikh Isa bin Salman Causeway.

Muharraq is known for its winding narrow alleyways and traditional Bahraini houses. Of particular note is the Sheikh Isa Bin Ali House, with its richly decorated ornate panelling and carved doors. The Arad Fort with its waterfront sight and the modern King Hamad Hospital are both significant places in this area. The bustling cultural hubs of Manama are only minutes away and the area teems with various shopping facilities, cafes, and restaurants with a rich variety of cuisines on offer.

يقع برج دار في منطقة البستين، التي تقع في الشمال الغربي من جزيرة المحرق. الاسم يعني حديقة هوائية في الأصل مستوحى من البساتين الوفيرة التي كانت في المنطقة وهي الآن بيئة حضرية معاصرة توفر الكثير من فرص العمل والوظائف وتحدها الشواطئ من الشمال والطرق إلى مطار البحرين الدولي القريب في الضفة الجنوبية. يسهل الوصول إلى الجزيرة الرئيسية في البحرين عبر جسر الشيخ عيسى بن سلمان.

تشتهر المحرق بالأزقة الضيقة والملقحة والمنازل البحرينية التقليدية. ومن الجدير بالذكر هو بيت الشيخ عيسى بن علي المزين بالأقواس المزخرفة والأبواب المنحوتة. وتعد قلعة عراد التي يحلها موقعا على مختلف الممرات البحرية، ومستشفى الملك حمد من أهم الأماكن في هذه المنطقة. كما تقع المراكز الثقافية الصاخبة في الملاءة على بعد دقائق فقط. وتحيط بالمنطقة مرافق التسوق والمقاهي والمطاعم التي تقدم مجموعة متنوعة من المأكولات.

## ABOUT DAR TOWER

This residential tower stands at 12-storey tall on a height of 33.2 metres rising from 980 square metres of land. It features clean lines that offer a passing nod to the art deco movement and decorative orange rectangular 'frames' that present a welcome contrast to its sand coloured walls and blueish glass. Enjoy the fantastic view of the beach and the promise of ocean air.

بمساحة ٩٨٠ متر مربع، يضم البرج السكني ١٢ طابقاً ويرتفع إلى ٣٣.٢ متر. ويتميز بخطوط جذابة لامعة أضافت لمسة فنية أنيقة للديكور الخارجي، وإطارات مستطيلة برتقالية التي تقدم تبايناً جميلاً للجدران ذات اللون الرملي والزجاج اللامع المائل إلى الأزرق. ويتمتع البرج بإطلالة رائعة على الشاطئ ونسيم هواء المحيط العليل.





## DAR TOWER INTERIORS



Residential accommodation consists of 50 studio apartments, ranging in size from 34.4 up to 49 square metres with kitchenette, bathroom and bedroom/lounge areas. The majority of the rooms have balconies as well.

There are 13 units for one bedroom apartment and 18 units for two bedroom apartments. The living room features open kitchens, bathrooms, living and dining rooms, guest washrooms and balconies.

تتكون الشقق السكنية من ٥٠ شقة استوديوه، تتراوح مساحتها من ٣٤.٤ حتى ٤٩ متر مربع، مع مطبخ صغير وحمام وغرفة نوم / صالة، وتحتوي معظم الغرف على شرفات.

هناك ١٣ شقة تتكون من غرفة نوم واحدة و ١٨ شقة بغرفتي نوم، وتتميز غرفة المعيشة بمطبخ مفتوحة وحمامات وغرف الجلوس وتناول الطعام، وحمامات للضيوف، وشرفات.



## FACILITIES AND AMENITIES

DAR Tower has a CCTV monitoring system and 24-hour security. The lounge offers an open area for relaxation.

The 12th floor is home to a Health Club for Ladies and Gents with treadmill, recumbent cycle, upright cycle, 3 stack multi-gym, dumbbells, and elliptical trainer; while the roof boasts an outdoor swimming pool and BBQ area for the perfect summer season experience.

برج دار لديه نظام مراقبة عبر الدوائر التلفزيونية المغلقة، بالإضافة إلى حراسة على مدار ٢٤ ساعة، وتوفر الحصالة منطقة ممتوحة للاسترخاء.

في الطابق الثاني عشر، تجد نادي اللياقة البدنية للرجال والسيدات مع أجهزة المشي، ودرجات الجلوس، ريكمبنت بايك، والدرجات الثابتة، و٣ أجهزة تدريبات متعددة، ودمبل، وألات رياضية ذات حركة اهليجية «elliptical trainer». في حين يضم السطح حمام سباحة خارجي في الهواء الطلق ومنطقة للشواء للاستمتاع بموسم صيف مثالي.





16

# FLOOR PLANS

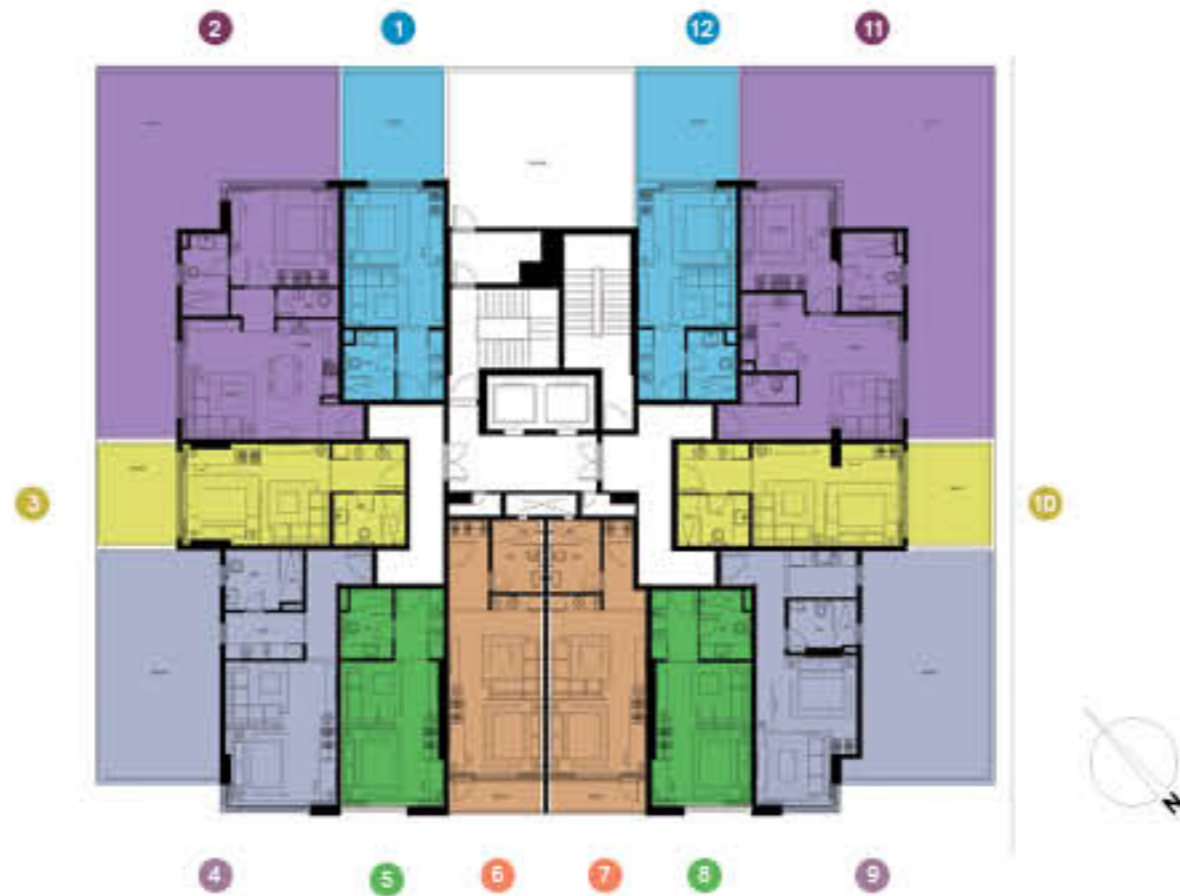
DAR TOWER





## 3TH-6TH FLOOR PLANS

- AREA  
60m<sup>2</sup>
- AREA  
32m<sup>2</sup>
- AREA  
34m<sup>2</sup>
- AREA  
44m<sup>2</sup>
- AREA  
34m<sup>2</sup>
- AREA  
40m<sup>2</sup>



Bin Faqoah reserves the right to make modifications and changes to features and finishes, brands, materials, building and landscape design, specifications, ceilings heights, number of floors, number of units, flooring patterns, and floor plans without notification. Approximate sizes are computed from the outside face of exterior walls. The same unit type may vary from floor to floor and/or be slightly altered. All illustrations reflect the artist's and architect's interpretation of the project. The total size of the unit is an approximate estimation and can vary.

## 7TH FLOOR PLAN

- AREA  
100m<sup>2</sup>
- AREA  
82m<sup>2</sup>
- AREA  
78m<sup>2</sup>

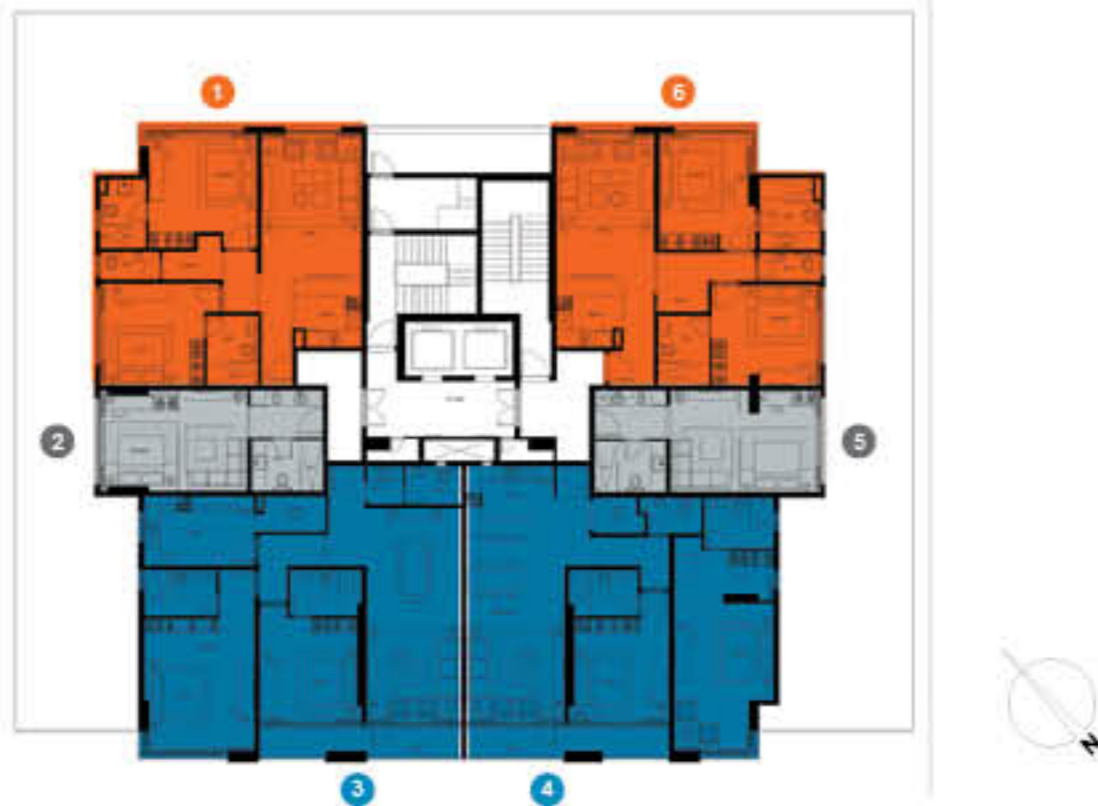


Bin Faqoah reserves the right to make modifications and changes to features and finishes, brands, materials, building and landscape design, specifications, ceilings heights, number of floors, number of units, flooring patterns, and floor plans without notification. Approximate sizes are computed from the outside face of exterior walls. The same unit type may vary from floor to floor and/or be slightly altered. All illustrations reflect the artist's and architect's interpretation of the project. The total size of the unit is an approximate estimation and can vary.



## 8TH-11TH FLOOR PLANS

- AREA  
100m<sup>2</sup>
- AREA  
35m<sup>2</sup>
- AREA  
137m<sup>2</sup>



Bin Faqoah reserves the right to make modifications and changes to features and finishes, brands, materials, building and landscape design, specifications, ceilings heights, number of floors, number of units, flooring patterns, and floor plans without notification. Approximate sizes are computed from the outside face of exterior walls. The same unit type may vary from floor to floor and/or be slightly altered. All illustrations reflect the artist's and architect's interpretation of the project. The total size of the unit is an approximate estimation and can vary.

## 12TH FLOOR PLAN

- AREA  
60m<sup>2</sup>
- AREA  
32m<sup>2</sup>



Bin Faqoah reserves the right to make modifications and changes to features and finishes, brands, materials, building and landscape design, specifications, ceilings heights, number of floors, number of units, flooring patterns, and floor plans without notification. Approximate sizes are computed from the outside face of exterior walls. The same unit type may vary from floor to floor and/or be slightly altered. All illustrations reflect the artist's and architect's interpretation of the project. The total size of the unit is an approximate estimation and can vary.



# FLOORS 3th-6th

1 Bedroom - Type A



AREA

135.01m<sup>2</sup>

Bin Faqeh reserves the right to make modifications and changes to features and finishes, brands, materials, bidding and landscape design, specifications, ceiling heights, number of floors, number of units, flooring patterns, and floor plans without notification. Approximate sizes are compiled from the outside face of exterior walls. The same unit type may vary from floor to floor and/or be slightly altered. All illustrations reflect the artist's and architect's interpretation of the project. The total size of the unit is an approximate estimation and can vary.



# FLOORS 3th-6th

1 Bedroom - Type B



AREA

142.39m<sup>2</sup>



Bin Faqeh reserves the right to make modifications and changes to features and finishes, brands, materials, building and landscape design, specifications, ceilings heights, number of floors, number of units, flooring patterns, and floor plans without notification. Approximate sizes are computed from the outside face of exterior walls. The same unit type may vary from floor to floor and/or be slightly altered. All illustrations reflect the artist's and architect's interpretation of the project. The total size of the unit is an approximate estimation and can vary.

# FLOORS 3th-6th

Studio - Type B1



AREA

49.43m<sup>2</sup>



Bin Faqeh reserves the right to make modifications and changes to features and finishes, brands, materials, building and landscape design, specifications, ceilings heights, number of floors, number of units, flooring patterns, and floor plans without notification. Approximate sizes are computed from the outside face of exterior walls. The same unit type may vary from floor to floor and/or be slightly altered. All illustrations reflect the artist's and architect's interpretation of the project. The total size of the unit is an approximate estimation and can vary.



# FLOORS 3th-6th

Studio - Type A



AREA

52.91m<sup>2</sup>



Bin Fazeel reserves the right to make modifications and changes to features and finishes, brands, materials, building and landscape design, specifications, ceilings heights, number of floors, number of units, flooring patterns, and floor plans without notification. Approximate sizes are compiled from the outside face of exterior walls. The same unit type may vary from floor to floor and/or be slightly altered. All illustrations reflect the artist's and architect's interpretation of the project. The total size of the units is an approximate estimation and can vary.



# FLOORS 3th-6th

Studio - Type B



AREA

51.66m<sup>2</sup>



Bin Fiqeesh reserves the right to make modifications and changes to features and finishes, brands, materials, building and landscape design, specifications, ceiling heights, number of floors, number of units, flooring patterns, and floor plans without notification. Approximate sizes are computed from the outside face of exterior walls. The same unit type may vary from floor to floor and/or be slightly altered. All illustrations reflect the artist's and architect's interpretation of the project. The total size of the unit is an approximate estimation and can vary.





# FLOORS 3th-6th

Studio - Type C1



AREA

89.25m<sup>2</sup>



Bin Faqeh reserves the right to make modifications and changes to features and finishes, brands, materials, building and landscape design, specifications, ceilings heights, number of floors, number of units, flooring patterns, and floor plans without notification. Approximate sizes are computed from the outside face of exterior walls. The same unit type may vary from floor to floor and/or be slightly altered. All illustrations reflect the artist's and architect's interpretation of the project. The total size of the unit is an approximate estimation and can vary.

# FLOORS 3th-6th

Studio - Type C2



AREA

87.98m<sup>2</sup>



Bin Faqeh reserves the right to make modifications and changes to features and finishes, brands, materials, building and landscape design, specifications, ceilings heights, number of floors, number of units, flooring patterns, and floor plans without notification. Approximate sizes are computed from the outside face of exterior walls. The same unit type may vary from floor to floor and/or be slightly altered. All illustrations reflect the artist's and architect's interpretation of the project. The total size of the unit is an approximate estimation and can vary.

# FLOORS 3th-6th

Studio - Type D



AREA

36.15m<sup>2</sup>



Bin Faqeh reserves the right to make modifications and changes to features and finishes, brands, materials, bidding and landscape design, specifications, ceilings heights, number of floors, number of units, flooring patterns, and floor plans without notification. Approximate sizes are computed from the outside face of exterior walls. The same unit type may vary from floor to floor and/or be slightly altered. All illustrations reflect the artist's and architect's interpretation of the project. The total size of the unit is an approximate estimation and can vary.





# 7TH FLOOR

1 Bedroom - Type C



AREA

83.41m<sup>2</sup>



Bin Faqeh reserves the right to make modifications and changes to features and finishes, brands, materials, building and landscape design, specifications, ceilings heights, number of floors, number of units, flooring patterns, and floor plans without notification. Approximate sizes are computed from the outside face of exterior walls. The same unit type may vary from floor to floor and/or be slightly altered. All illustrations reflect the artist's and architect's interpretation of the project. The total size of the unit is an approximate estimation and can vary.

# 7TH FLOOR

1 Bedroom - Type D



AREA

79.21m<sup>2</sup>



Bin Faqeh reserves the right to make modifications and changes to features and finishes, brands, materials, building and landscape design, specifications, ceilings heights, number of floors, number of units, flooring patterns, and floor plans without notification. Approximate sizes are computed from the outside face of exterior walls. The same unit type may vary from floor to floor and/or be slightly altered. All illustrations reflect the artist's and architect's interpretation of the project. The total size of the unit is an approximate estimation and can vary.

# 7TH FLOOR

1 Bedroom - Type E



AREA

79.09m<sup>2</sup>



Bin Faqeh reserves the right to make modifications and changes to features and finishes, brands, materials, building and landscape design, specifications, ceiling heights, number of floors, number of units, flooring patterns, and floor plans without notification. Approximate sizes are computed from the outside face of exterior walls. The same unit type may vary from floor to floor and/or be slightly altered. All illustrations reflect the artist's and architect's interpretation of the project. The total size of the unit is an approximate estimation and can vary.





# 7TH FLOOR

2 Bedrooms - Type A



AREA

94.03m<sup>2</sup>



Bin Faqeh reserves the right to make modifications and changes to features and finishes, brands, materials, building and landscape design, specifications, ceilings heights, number of floors, number of units, flooring patterns, and floor plans without notification. Approximate sizes are computed from the outside face of exterior walls. The same unit type may vary from floor to floor and/or be slightly altered. All illustrations reflect the artist's and architect's interpretation of the project. The total size of the unit is an approximate estimation and can vary.

# 7TH FLOOR

2 Bedrooms - Type B



AREA

94.66m<sup>2</sup>



Bin Faqeh reserves the right to make modifications and changes to features and finishes, brands, materials, building and landscape design, specifications, ceilings heights, number of floors, number of units, flooring patterns, and floor plans without notification. Approximate sizes are computed from the outside face of exterior walls. The same unit type may vary from floor to floor and/or be slightly altered. All illustrations reflect the artist's and architect's interpretation of the project. The total size of the unit is an approximate estimation and can vary.

# FLOORS 8th-11th

STUDIO - Type B1



AREA

36.55m<sup>2</sup>

Bin Faqeh reserves the right to make modifications and changes to features and finishes, brands, materials, bidding and landscape design, specifications, ceilings heights, number of floors, number of units, flooring patterns, and floor plans without notification. Approximate sizes are computed from the outside face of exterior walls. The same unit type may vary from floor to floor and/or be slightly altered. All illustrations reflect the artist's and architect's interpretation of the project. The total size of the unit is an approximate estimation and can vary.





# FLOORS 8th-11th

STUDIO - Type B2



AREA

37.38m<sup>2</sup>



Bin Faqeh reserves the right to make modifications and changes to features and finishes, brands, materials, building and landscape design, specifications, ceilings heights, number of floors, number of units, flooring patterns, and floor plans without notification. Approximate sizes are computed from the outside face of exterior walls. The same unit type may vary from floor to floor and/or be slightly altered. All illustrations reflect the artist's and architect's interpretation of the project. The total size of the unit is an approximate estimation and can vary.

# FLOORS 8th-11th

2 BEDROOMS - Type A



AREA

49.03m<sup>2</sup>



Bin Faqeh reserves the right to make modifications and changes to features and finishes, brands, materials, building and landscape design, specifications, ceilings heights, number of floors, number of units, flooring patterns, and floor plans without notification. Approximate sizes are computed from the outside face of exterior walls. The same unit type may vary from floor to floor and/or be slightly altered. All illustrations reflect the artist's and architect's interpretation of the project. The total size of the unit is an approximate estimation and can vary.

# FLOORS 8th-11th

2 BEDROOMS - Type B



AREA

94.66m<sup>2</sup>



Bin Faqeh reserves the right to make modifications and changes to features and finishes, brands, materials, building and landscape design, specifications, ceilings heights, number of floors, number of units, flooring patterns, and floor plans without notification. Approximate sizes are computed from the outside face of exterior walls. The same unit type may vary from floor to floor and/or be slightly altered. All illustrations reflect the artist's and architect's interpretation of the project. The total size of the unit is an approximate estimation and can vary.

# FLOORS 8th-11th

2 BEDROOMS - Type C



AREA

133.40m<sup>2</sup>



Bin Faqeh reserves the right to make modifications and changes to features and finishes, brands, materials, building and landscape design, specifications, ceilings heights, number of floors, number of units, flooring patterns, and floor plans without notification. Approximate sizes are computed from the outside face of exterior walls. The same unit type may vary from floor to floor and/or be slightly altered. All illustrations reflect the artist's and architect's interpretation of the project. The total size of the unit is an approximate estimation and can vary.



# FLOORS 8th-11th

2 BEDROOMS - Type D



AREA

126.98m<sup>2</sup>



Bin Faqeh reserves the right to make modifications and changes to features and finishes, brands, materials, building and landscape design, specifications, ceilings heights, number of floors, number of units, flooring patterns, and floor plans without notification. Approximate sizes are computed from the outside face of exterior walls. The same unit type may vary from floor to floor and/or be slightly altered. All illustrations reflect the artist's and architect's interpretation of the project. The total size of the unit is an approximate estimation and can vary.

# 12TH FLOOR

STUDIO - Type A



AREA

37.4 m<sup>2</sup>



Bin Faqeh reserves the right to make modifications and changes to features and finishes, brands, materials, building and landscape design, specifications, ceilings heights, number of floors, number of units, flooring patterns, and floor plans without notification. Approximate sizes are computed from the outside face of exterior walls. The same unit type may vary from floor to floor and/or be slightly altered. All illustrations reflect the artist's and architect's interpretation of the project. The total size of the unit is an approximate estimation and can vary.

# 12TH FLOOR

## STUDIO - Type B



AREA

35.0 m<sup>2</sup>



Bin Fogaeh reserves the right to make modifications and changes to features and finishes, brands, materials, building and landscape design, specifications, ceiling heights, number of floors, number of units, flooring patterns, and floor plans without notification. Approximate sizes are computed from the outside face of exterior walls. The same unit type may vary from floor to floor and/or be slightly altered. All illustrations reflect the artist's and architect's interpretation of the project. The total size of the unit is an approximate estimation and can vary.





# 12TH FLOOR

1 BEDROOM - Type A



AREA

63.0 m<sup>2</sup>



Bin Fajeh reserves the right to make modifications and changes to features and finishes, brands, materials, building and landscape design, specifications, ceiling heights, number of floors, number of units, flooring patterns, and floor plans without notification. Approximate sizes are computed from the outside face of exterior walls. The same unit type may vary from floor to floor and/or be slightly altered. All illustrations reflect the artist's and architect's interpretation of the project. The total size of the unit is an approximate estimation and can vary.















**BIN FAQEEH**  
REAL ESTATE BROKERAGE  
MEMBER RIAA

Tel: +973 77144144 | Fax: +973 77155155

[www.binfaqeeh.com](http://www.binfaqeeh.com)

P.O. Box 20007, Manama

Kingdom of Bahrain



@binfaqeeh\_co